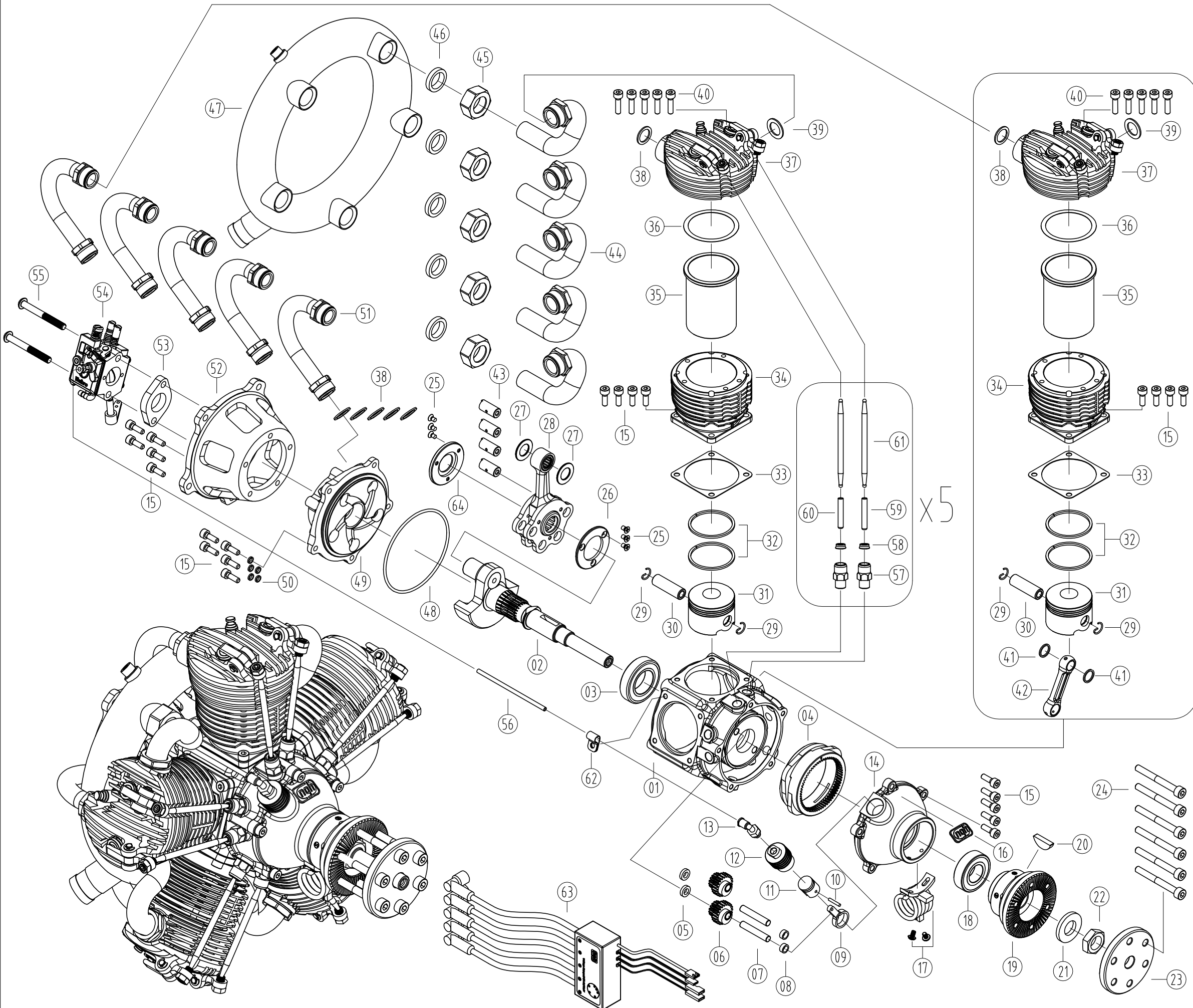


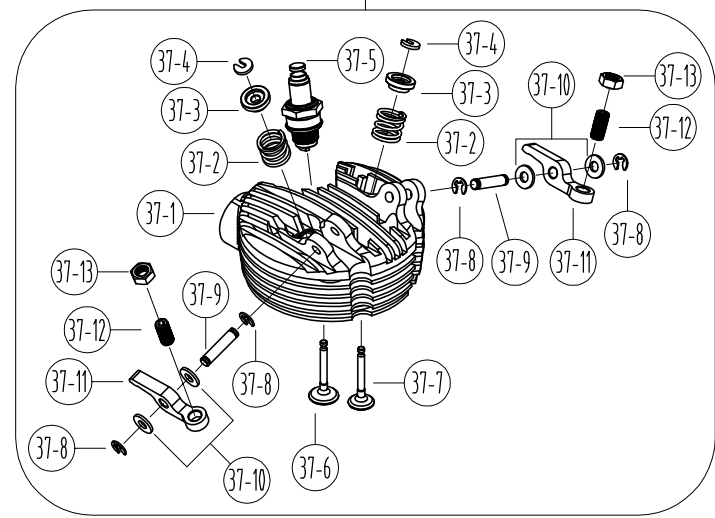
# GF150R5 Five-cylinder of radial configuration Four-Stroke GAS Engine Exploded Parts View



NO	PART	QTY	DESCRIPTION	NO	PART	QTY	DESCRIPTION
37-3	F38313	10		01	150101	1	
37-4	F38314	10		02	150110	1	
37-5	9101	5	CM-6	03	6344	1	61904-2RS (20x37x9)
37-6	F38311	5		04	150301	1	
37-7	F38312	5		05	150326	2	
37-8	6701	20	3x2.5x0.6	06	150325	2	COMBINATION
37-9	150309	10		07	150328	2	
37-10	150323	20		08	150327	2	
37-11	150308	10		09	150515	1	
37-12	F38307	10		10	150516	1	
37-13	6222	10	M5x0.5	11	150510	1	COMBINATION
38	150413	10		12	150514	1	
39	150423	5		13	5005	1	PL3-M5C
40	6108	25	M4x16	14	150113	1	
41	150127-F	8		15	6117	35	M4x14
42	150122	4		16	150160	1	
43	150123	4		17	9203	1	
44	150420	5	COMBINATION	18	6345	1	6002-RS (15x32x9)
45	150402	5		19	150150	1	COMBINATION
46	150403	5		20	6605	1	4x7.5x19
47	150401	1		21	150114	1	
48	7314	1	65x2	22	6243	1	M12x1x6
49	150103	1		23	150104	1	
50	6414	5	4	24	6134	6	M5x4.5
51	150410	5	COMBINATION	25	6143	6	M3x5
52	150107	1		26	150124	1	
53	150201	1		27	150127-Z	2	
54	150200	1	COMBINATION	28	150120	1	COMBINATION
55	6131	2	M5x4.5	29	F30137	10	
56	150211	1	D3x0.5x140	30	F30136	5	
57	150318	10		31	F30141	5	
58	7315	10	4x7x2.1	32	F30143	10	
59	150304-ex	5		33	F30109	5	
60	150304-in	5		34	150106	5	
61	150305	10		35	150142	5	
62	5006	1		36	F30108	5	
63	9503	1	CM-6	37	150320	5	COMBINATION
64	150128	1		37-1	150102	5	COMBINATION
				37-2	F38315	10	

x4

x5



x4

x5